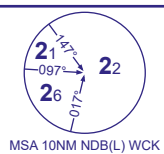
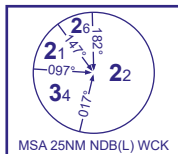


INSTRUMENT APPROACH CHART - ICAO

WICK

NDB(L)/DME
RWY 13
(ACFT CAT A,B,C,D)

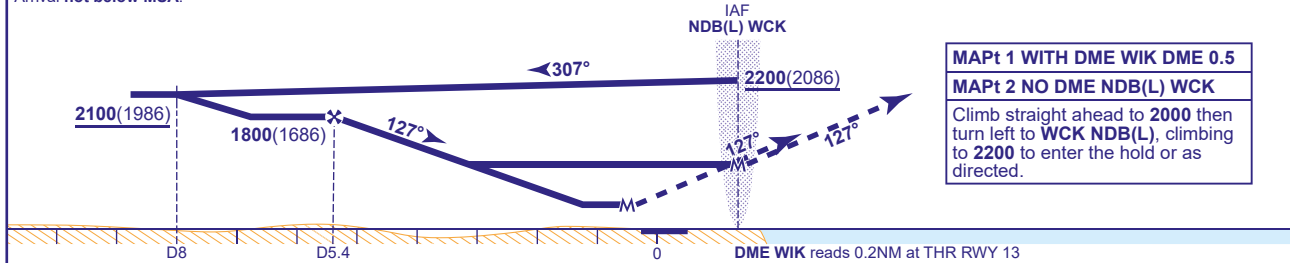
APP	119.705	WICK APPROACH	AD ELEVATION	126
TWR	119.705	WICK TOWER	THR ELEVATION	114
ATIS	113.600	WICK INFORMATION	OBSTACLE ELEVATION	1508 AMSL (1394) (ABOVE THR)
			BEARINGS ARE MAGNETIC	

TRANSITION ALTITUDE
3000

RECOMMENDED PROFILE Gradient 5.2%, 320FT/NM

DME WIK	5	4	3	2
ALT(HGT)	1670(1556)	1360(1246)	1040(926)	730(616)

Arrival not below MSA.



Aircraft Category	A	B	C	D	Rate of descent	G/S KT	160	140	120	100	80
OCA (OCH)	WITH DME	480(366)	480(366)	480(366)	480(366)	FT/MIN	840	740	630	530	420
	NO DME	1130(1016)	1130(1016)	1130(1016)	1130(1016)						
	Total Area	630(504)	630(504)	1090(964)	1090(964)						
VM(C)OCA (OCH AAL)	North of RWY 13/31	530(404)	620(494)	720(594)	820(694)						

AIRCRAFT UNABLE TO RECEIVE DME WIK

As for basic procedure except fly outbound for 3 MIN descending to 2100(1986) then turn right inbound when established on FAT descend to NO DME MDA(H).

NOTE Lowest altitude to commence procedure from hold is 2200.

CHANGE (3/26): MAG INFO REVISED. MSA REVISED. PROCEDURE ALTITUDES REVISED. MISSED APPROACH REVISED. OCA (OCH) NO DME MINIMA REVISED.